

Think rags are better? **THINK AGAIN.**

Reusable Rags

- ✗ **Inconsistent** in their cleanliness, shape, and material fibres
- ✗ **Inefficient** because they may leave lint behind and may not absorb as well
- ✗ Takes up a lot of **storage space**



VS



WYPALL Wipes

- ✓ **Consistent** and reliable due to their uniform size, shape, and material
- ✓ **Increase productivity** and designed to reduce chances of leaving lint behind
- ✓ Require **less space** than rags

Problems Faced When Cleaning Without The Right Tools

In most manufacturing facilities, cleaning tools are used to remove grime, dirt, dust, paint, and grease off surfaces. Cleaning all these off without the right materials could also cause some potential hazards for your workers, such as:

1

Sources of contamination for sensitive equipment components when reusing dirty rags⁶.

3

Uncontrolled solvent management leads to avoidable evaporation waste and potential exposure to harmful chemicals³.

2

Contamination risk in heavy maintenance hangar from dirty tissue rolls lying around without proper storage³.

Common Myths of Dry, Disposable Wipes

Here are some myths we want to debunk about wipes — just so that you better understand how useful dry, disposable wipes can be to your facility.

Myth 1

Wipes are not as absorbent or “high quality” as compared to rags.

Truth 1

On the contrary, wipes can clean up a wide variety of messes due to their effective absorbency for oil and water as compared to most cotton rags¹.

Myth 2

Rags save time and resources as compared to wipes.

Truth 2

Consider the amount of time needed to collect dirty rags across a facility, re-delivery of freshly laundered rags to be made accessible by all workers, and the need to sort the rags for its usability. This all adds to the additional time and resources required to maintain the rags.



Here's where WypAll™ comes in.

WypAll™ wipes are designed with your needs in mind. They are lower in wastage than rags and deliver consistently high efficiency and effective wiping performance.

Important Features of Effective Industrial Wipes

Throughout manufacturing and maintenance, wipes are often used for general and critical tasks. It's important to select a wipe that meets the application requirements.



Designed with users' needs in mind



Designed to be safe for products, surfaces, workplace and users



Deliver consistently high efficiency and effective wiping performance



Manufactured to tight specifications in international-quality facilities, especially for manufacturing facilities that have stringent cleaning protocols

Points To Consider When Choosing WypAll™ Wipes

With its convenient & controlled dispensing, these wipes require no pre-sorting & come ready-to-use

These wipes feature a hydroknit basesheet which is designed to deliver both strength & absorbency

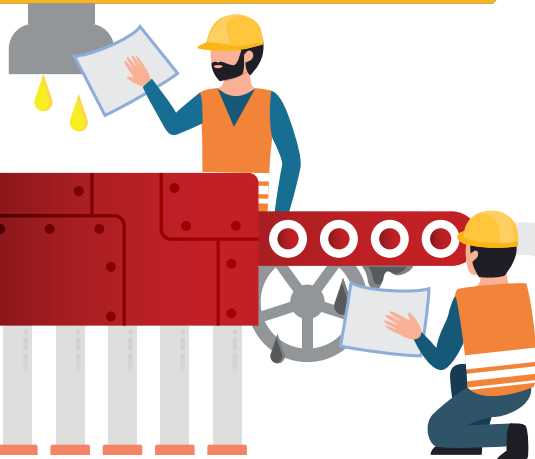
WypAll™ wipes are designed to be compatible with commonly-used Spray & Wipe disinfectants³

X60 wipes can absorb more oil, faster than most cotton rags¹

Better lint control with X60¹ & X70² — they leave less lint than most cotton rags

X80 wipes maintain excellent stability & performance in common industrial solvents³

X80 wipes are ideal for heavy-duty machinery cleaning in industrial & manufacturing tasks⁴



How WypAll™ Can Help

With various products to match different types of cleaning needs, WypAll™ wipes are designed to be used for everyday clean-ups to heavy-duty tasks.

Task-specific wiping solutions available for every type of cleaning you face in a manufacturing facility

High durability to help wipe and clean surfaces with ease⁵, which is ideal for heavy-duty cleaning and machinery cleaning in industrial and manufacturing tasks⁶

Reduced risks of lint left behind during product and surface wiping and, machine maintenance^{1,2}

Wipes are ideal to clean up a variety of messes due to superior absorbency in oil and water as compared to most cotton rags¹

Colour-coded wipes for users' stipulated cleaning purposes, reduce the risk of cross-contamination and increase workplace safety

- 1 Based on tests conducted by independent 3rd party laboratories in 2019/20: comparing WypAll X60 vs rags
2 Based on internal tests by STM-00135 test method
3 Tested with disinfectants like hydrogen peroxide, bleach and quats. Follow manufacturer's instructions for chemical application and dwell time. Please test with your preferred solvent(s) before using.
4 Based on tests using GB/T 20808/ISO 13934-1 and ISO 12947-3:2007 Textiles
5 Based on tests conducted by independent 3rd party laboratories in 2019/20
6 Based on tests using GB/T 20808/ISO 13934-1 and ISO 12947-3:2007 Textiles



WYPALL® BRAND

WypAll™ can help you and your team tackle the issues you currently face with all the old cleaning methods. With wipes like ours, cleaning management in your manufacturing facility will be effortless.

 **Kimberly-Clark**
PROFESSIONAL

® / ™ Trademarks Kimberly-Clark Worldwide, Inc. © KCWW.

Guaranteed support: The answer to any queries you may have on our products is just a phone call or email away.
Australia: kcprofessional.com.au/contact-us or 1800 647 994
New Zealand: kcprofessional.co.nz/contact-us or 0800 447 814