



INDUSTRIAL PRODUCTS®



CONSUMER CATALOGUE

INDUSTRIAL SERIES COMPRESSOR FEATURES

- Durable copper wound motors
- Full brass non-return valve
- Soft start valve
- Condor pressure switches
- 145psi (10 Bar) maximum pressure
- AS1210 Approved tanks
- Thermal overload protection
- Includes filter regulator with one-touch "Nitto style" couplers
- 200mm Solid rubber wheels
- 3 year pump warranty



**2.5HP DIRECT DRIVE
AIR COMPRESSOR - 50L**

- Ideal builder's compressor • Single cast iron cylinder pump with aluminium head • Filter regulator • 240v 10amp
- Large 50L tank • FAD 175 L/min (TM350-25050)



**2.2HP BELT DRIVE
AIR COMPRESSOR - 50L**

- Ideal builder's compressor • V Twin cast iron cylinder pump with aluminium heads • Filter regulator • 240v 10amp
- Large 50L tank • FAD 185 L/min (TM351-22050)



**2.5HP BELT DRIVE
AIR COMPRESSOR - 60L**

- V Twin cast iron cylinder pump with aluminium heads
- Filter regulator • 240v 10amp • Large 60L tank
- FAD 257 L/min (TM351-25060)



**2.5HP BELT DRIVE
AIR COMPRESSOR - 90L**

- V Twin cast iron cylinder pump with aluminium heads
- Filter regulator • 240v 10amp • Large 90L tank
- FAD 257 L/min (TM351-25090)



**3HP BELT DRIVE
AIR COMPRESSOR - 50L**

- Ideal for commercial applications • Cast iron cylinder pump with aluminium head • Filter regulator • Large 50L tank • FAD 318 L/min • 240v 15amp (TM351-30050)



**3HP BELT DRIVE
AIR COMPRESSOR - 60L**

- Ideal for commercial applications • Triple cast iron cylinder pump with aluminium heads • Filter regulator
- 60L tank • FAD 328 L/min • 240v 15amp (TM351-30060)



**3HP BELT DRIVE
AIR COMPRESSOR - 90L**

- Ideal for commercial applications • Triple cast iron cylinder pump with aluminium heads • Filter regulator
- 90L tank • FAD 328 L/min • 240v 15amp (TM351-30090)



**5.5HP PETROL BELT
DRIVE AIR COMPRESSOR - 60L**

- Powered by Honda GX160 5.5HP engine • HD cast iron cylinder with aluminium head • Filter regulator • Large 60L tank • FAD 355 L/min (TM352-55060)



**5.5HP 3 PHASE, STATIONARY
AIR COMPRESSOR - 200L**

- Ideal for commercial workshops • Twin cast iron cylinder pump with aluminium head • Soft start • Large 200L tank
- FAD 507 L/min (TM353-55200)



**7.5HP 3 PHASE, STATIONARY
AIR COMPRESSOR - 270L**

- Ideal for commercial workshops • Triple cast iron cylinder pump with aluminium head • Soft start • Large 270L tank
- FAD 704 L/min (TM353-75270)



**10HP 3 PHASE, STATIONARY
AIR COMPRESSOR - 270L**

- Ideal for commercial workshops • Triple cast iron cylinder pump with aluminium head • Soft start • Large 270L tank
- FAD 1143 L/min (TM353-10270)

ALUMINIUM TWIN TANK COMPRESSOR FEATURES

- Perfect for nailing applications
- Powerful 4 pole induction motors
- Oil free pumps for virtually maintenance free operation
- Very quiet, ideal for indoor use
- Light weight aircraft aluminium alloy tanks
- Compact and portable design
- Max pressure: 135 PSI (9.3 Bar)
- One-touch "Nitto style" couplers
- 3 year complete warranty



Available from September 2020



1.0HP DIRECT DRIVE AIR COMPRESSOR - 10L

- Silent oil free pump - only 60dB! • FAD : 53 L/min
- 10L tank • Weight : 19kg (TM350-10010)



2.0HP DIRECT DRIVE AIR COMPRESSOR - 16L

- Silent oil free pump - only 67dB • FAD : 109 L/min
- 16L tank • Weight : 26.4kg (TM350-20016)

TRADE SERIES COMPRESSOR FEATURES

- Ideal for the home workshop and intermittent professional user
- Maximum working pressure of 116 psi (8 Bar)
- Regulated outlet
- One-touch "Nitto style" coupler
- 3 year pump warranty



2.5HP DIRECT DRIVE AIR COMPRESSOR - 36L

- Single cylinder oil lubricated pump • FAD : 135 L/min
- Solid rubber wheels • 36L tank • Regulated outlet with one-touch "Nitto style" connector (TM354-25036)



2.2HP BELT DRIVE AIR COMPRESSOR - 50L

- V Twin cast iron cylinder pump • FAD : 170 L/min
- Solid rubber wheels • 50L tank • Regulated outlet with one-touch "Nitto style" connector (TM354-22050)



PVC AIR HOSES - FITTED

- Durable PVC • Grease, oil & abrasion resistant • Nitto style fittings • Kink proof collar • Max pressure : 300 PSI

Part No.	Description
TM300-210	10M 3/8" I.D.
TM300-220	20M 3/8" I.D.
TM300-230	30M 3/8" I.D.



HIGH-FLEX AIR HOSES

- Hybrid polymer High-Flex hose
- Anti-kink technology, the hose will not kink when under pressure • Superior all weather flexibility -5°C to 65°C • 300PSI maximum working pressure • Hi-visibility for safety
- Nitto style fittings

Part No.	Description
TM300-315N	15M 3/8" I.D.
TM300-330N	30M 3/8" I.D.
TM300-415	15m 1/2" I.D.
TM300-430	30m 1/2" I.D.



HIGH-FLEX AIR HOSES - BULK

- Hybrid polymer High-Flex hose
- Anti-kink technology the hose will not kink when under pressure flexibility -5°C to 65°C • 300PSI max working pressure • No fittings or collar

Part No.	Description
TM300-3100	100M 3/8" I.D.
TM300-4100	100M 1/2" I.D.
TM300-5100	100M 3/4" I.D.

FILTER REGULATORS

- Sintered bronze filter element
- Max input pressure 175 PSI
- Max output pressure 145 PSI
- 80mL drain capacity
- Includes mounting bracket

Part No.	Description
TM340-012	• 1/4" Port • Semi-auto drain • 1750 l/min max flow
TM340-014	• 1/2" Port • Automatic drain • 3000 l/min max flow



15M HOSE REEL

- Reinforced PVC air hose • Auto retractable • Auto lock to any length • Auto track guided hose laying system • Hose length: 15m • Hose I.D.: 10mm (3/8") (TM300-015)



20M HOSE REEL

- Hybrid high-flex air hose • Anti-kink technology
- Auto lock to any length • Auto retractable • Hose length: 20m • Hose I.D. :10mm (3/8") • Hi-visibility for safety (TM300-020)



30M HOSE REEL

- Braided PU hose • Manual rewind • Heavy duty steel frame • Kink-proof collar on hose • Hose length: 30m • Hose I.D.: 8mm (TM300-030)



IMPACT WRENCH 1/2" DRIVE

- Heavy duty twin hammer • 3 torque settings • Max torque: 680 Nm (500 ft-lb)
- Free speed: 7000rpm (TM340-135)



COMPOSITE IMPACT WRENCH 1/2" DRIVE

- Aluminium composite material construction • Heavy duty twin hammer • 3 torque settings
- 820 Nm (625 ft-lb) Max torque
- 6,800rpm Free speed (TM340-136)



COMPOSITE IMPACT WRENCH 3/4" DRIVE

- Aluminium composite material construction • Heavy duty twin hammer • 3 torque settings
- 1,200 Nm (885 ft-lb) Max torque
- 4,200rpm Free speed (TM340-145)



1/2" DRIVE IMPACT SOCKET SET

- 11 Piece 10, 12, 13, 14, 15, 17, 18, 19, 21, 22, 24mm • Chrome Molybdenum Steel (Cr-Mo), hardened and tempered (TM371-001)



1/2" DRIVE DEEP IMPACT SOCKET SET

- 11 Piece 10, 12, 13, 14, 15, 17, 18, 19, 21, 22, 24mm • Chrome Molybdenum Steel (Cr-Mo), hardened and tempered (TM371-002)



RATCHET WRENCHES

- Compact design • Rear 4 speed regulator • Max torque: 85 Nm (60 ft-lb)
- Free speed: 160rpm
- (3/8" Drive, TM340-225)
- (1/2" Drive, TM340-235)



DIE GRINDER

- Compact design
- Rear 4 speed regulator
- Length: 173mm
- Free speed: 25000rpm (TM340-312)



DIE GRINDER KIT WITH 3 CARBIDE BURRS

- Die grinder as per TM340-312, Including: 3/8" Cylindrical - End Cut, 3/8" Oval Shape, 3/8" Tree Shape - Radius End Cut (TM340-312KIT3)



ANGLE HEAD DIE GRINDER

- Compact design
- Rear 4 speed regulator
- Length: 180mm
- Free speed: 20000rpm (TM340-322)



CUT OFF TOOL

- Compact design
- Rear 4 speed regulator
- Cutting wheel: 75mm (3")
- Free speed: 20000rpm (TM340-502)



HYDRAULIC RIVETER

- Sets 2.4, 3.2, 4.0, 4.8mm Steel, Aluminium & Stainless steel rivets
- Traction Power: 3,086lb (1400kg)
- Stroke Length: 16mm (TM340-802)



NEEDLE SCALER

- Heavy duty metal construction
- Blows per minute: 2800
- Stroke: 24mm
- Length: 315mm (TM340-414)



AIR HAMMER KIT

- Includes 5 piece chisel kit
- Blows per minute: 3000rpm
- Stroke: 66mm
- (TM340-404)



AIR DRILL 3/8" CHUCK

- Quick change keyless chuck
- Adjustable auxiliary handle
- Free speed: 2200rpm (TM340-724)



AIR DRILL 1/2" CHUCK

- Quick change keyless chuck
- Adjustable auxiliary handle
- Free speed: 700rpm (TM340-734)



DUAL ACTION SANDER

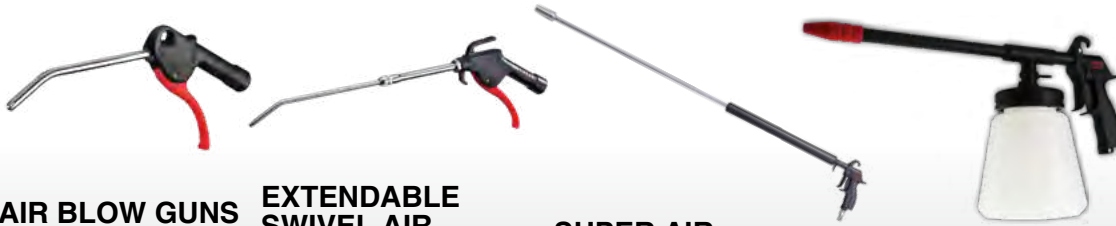
- Toolless pad release system
- Dual action pad
- Sanding pad: 150mm (6")
- Free speed: 10000rpm (TM340-602)



PALM SANDER

- 2 in 1 central & non-vacuum
- Rear exhaust • Sanding pad: 150mm (6") • Free speed: 10000rpm (TM340-614)

BLOW GUNS, SPRAY GUNS & TYRE INFLATORS



AIR BLOW GUNS

Part No.	Nozzle Length
M7-JC405	125mm
M7-JC410	250mm
M7-JC412	305mm
M7-JC424	610mm
M7-JC435	890mm

EXTENDABLE SWIVEL AIR BLOW GUN

- Nozzle length: 6-1/2" to 12" / 165 to 305mm • Tube extends and retracts for optimal positioning • Nozzle angle rotates (M7-JC202)

SUPER AIR BLOW GUNS

- Venturi nozzle with 3x airflow

Part No.	Nozzle Length
M7-JC640	1016mm
M7-JC680	2032mm

ENGINE CLEANING GUN

- Cup capacity: 1.0L
- Composite body (M7-SX1615)



DIAL GAUGE TYRE INFLATOR

- BAR, PSI, KPA & KG/CM²
- 0 to 220 PSI range
- 1/4" BSP inlet
- Nitto style plug (TM340-001)



SUCTION FEED GENERAL PURPOSE

- 2.0mm Nozzle • 1000mL Aluminium pot (TM340-901)

SUCTION FEED PROFESSIONAL

- 1.4mm & 2.0mm Nozzles
- 1000mL Aluminium pot (TM340-902)

GRAVITY FEED GENERAL PURPOSE

- 2.0mm Nozzle • 600mL Plastic pot (TM340-903)

GRAVITY FEED PROFESSIONAL

- 1.4mm & 2.0mm Nozzles
- 600mL Plastic pot (TM340-904)



DIGITAL TYRE INFLATOR

- BAR, PSI, KPA & KG/CM²
- 40cm Hose
- Nitto style plug (TM340-002)



S-770 SERIES SUCTION FEED GUNS

- Pot size : 1000ml • Includes : Gun, pot, stainless steel nozzle and needle • A popular conventional high pressure spray gun that provides extremely fine atomisation for the D.I.Y. person to the professional

Part No.	Nozzle Size	Spray Pattern
S770-11S	1.5mm	235mm
S770-21S	1.7mm	245mm
S770-31S	2.0mm	260mm
S770-41S	2.5mm	275mm
S770-51S	3.0mm	275mm



S-106 SERIES GRAVITY FEED GUNS

- Pot size : 600ml
- Includes : Gun, pot, stainless steel nozzle and needle
- Provides constant paint flow at lower pressures, and extremely fine atomisation

Part No.	Nozzle Size	Spray Pattern
S106-141G	1.4mm	250mm
S106-201G	2.0mm	270mm
S106-251G	2.5mm	270mm
S106-281G	2.8mm	270mm



SUCTION FEED TOUCH UP GUN

- Pot size : 250ml
- Nozzle size : 1.4mm
- Spray pattern : 120mm
- Includes : Gun, pot, stainless steel nozzle and needle
- Ideal for custom designing, auto touch-up work, detail spray work and stencil spraying (SJ108)



PREMIUM SMP SERIES SUCTION FEED GUNS

- Achieves large fan, premium finishing results, fast application speed and 65% transfer efficiency at 29PSI
- Ideal for car refinishing, high class furniture and industrial use
- Adjustable spray pattern 280-330mm
- Includes: Gun, 1000mL pot, stainless steel nozzle and needle

Part No.	Nozzle Size
SG-SMP106FS-014	1.4mm
SG-SMP106FS-016	1.6mm
SG-SMP106FS-018	1.8mm
SG-SMP106FS-020	2.0mm
SG-SMP106FS-025	2.5mm



PREMIUM SMP SERIES GRAVITY FEED GUNS

- Achieves large fan, premium finishing results, fast application speed and 65% transfer efficiency at 29PSI
- Ideal for car refinishing, high class furniture and industrial use
- Adjustable spray pattern 280-330mm
- Includes: Gun, 600mL pot, stainless steel nozzle and needle

Part No.	Nozzle Size
SG-SMP106FG-013	1.3mm
SG-SMP106FG-014	1.4mm
SG-SMP106FG-015	1.5mm
SG-SMP106FG-018	1.8mm
SG-SMP106FG-020	2.0mm
SG-SMP106FG-025	2.5mm



PROFESSIONAL EVO-T SERIES GRAVITY FEED GUNS

- EVO-T Patented air cap design providing ultra fine finish & excellent transfer efficiency exceeding 72% at 15PSI
- Adjustable spray pattern 280-330mm
- Includes: Gun, 600mL pot, stainless steel nozzle and needle

Part No.	Nozzle Size
SG-EVO106FG-013	1.3mm
SG-EVO106FG-014	1.4mm
SG-EVO106FG-018	1.8mm
SG-EVO106FG-020	2.0mm
SG-EVO106FG-025	2.5mm





1/2" COMPACT AIR IMPACT WRENCH

- Lightweight, only 1.6KG
- Low noise level, only 85DB
- Compact size, only 115.5mm length
- Powerful, 680Nm (500ft-lb) max torque • 16mm Bolt capacity (M7-NC4610Q)



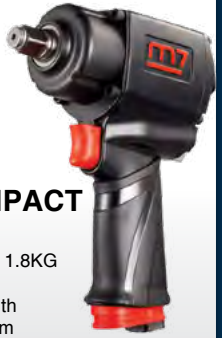
1/2" AIR IMPACT WRENCH

- Compact size, only 104mm length
- Lightweight, only 1.4KG
- Powerful, 900Nm (650ft-lb) Max Torque
- 16mm Bolt capacity (M7-NC4650H)



1/2" AIR IMPACT WRENCH

- Lightweight, only 1.7KG
- Powerful, 1650Nm (1200ft-lb) Max Torque
- Extra heavy duty twin hammer
- Value For Money, High quality & specs • 25mm Bolt capacity
- Magnesium composite body (M7-NC4255QH)



1/2" AIR IMPACT WRENCH

- Lightweight, only 1.8KG
- Compact size, only 141mm length
- Powerful, 1500Nm (1100ft-lb) Max torque
- 25mm Bolt capacity
- Extra heavy duty twin hammer (M7-NC4256Q)



3/4" AIR IMPACT WRENCH

- Lightweight, only 2.68KG
- Low noise level, only 83DB
- Powerful, 1650Nm (1200ft-lb) Max torque • Compact metal body, only 171mm length • 25mm Bolt capacity (M7-NC6236Q)



3/4" AIR IMPACT WRENCH

- Lightweight composite body, only 1.9KG
- Low noise level, only 85DB
- Powerful, 1900Nm (1400ft-lb) Max torque! • Compact - Only 198mm Length • 25mm Bolt capacity (M7-NC6255QH)



SUPER DUTY 3/4" AIR IMPACT WRENCH

- Lightweight composite body, only 3.0KG!
- Low noise level, only 88DB
- Powerful, 2000Nm (1500ft-lb) Max torque • Super Duty, designed for the commercial tyre industry
- 30mm Bolt capacity (M7-NC6266)



3/4" D HANDLE AIR IMPACT WRENCH

- Powerful, 2000Nm (1500ft-lb) Max torque
- 27mm Bolt capacity
- 320mm Overall length
- 5.7KG (M7-NC6218)



1" AIR IMPACT WRENCH

- Powerful 2000Nm (1500ft-lb) Max torque
- 5KG Weight • 92DB Noise level • 30mm Bolt capacity (M7-NC8217)



1" AIR IMPACT WRENCH

- 3250Nm (2400ft-lb) Max torque
- 36mm Bolt capacity • 390mm Overall length • 100dB Sound pressure • 12.1KG (M7-NC8252)



1" AIR IMPACT WRENCH

- 3650Nm (2710ft-lb) Max torque
- Very lightweight - 11kg • Mighty spring in the cylinder increases the air efficiency
- 39.7mm Bolt capacity • 370mm Overall length • 100dB Sound pressure (M7-NC8382)



1/2" DRIVE DEEP IMPACT SOCKET SET

- 10 Piece 10, 12, 13, 14, 15, 17, 19, 21, 24, 27mm (M7-MB45010M)



AIR HYDRAULIC RIVETER

- Nozzle sizes : 2.4, 3.2, 4.0, 4.8mm
- 4.8mm (3/16") Aluminium & steel rivet capacity
- 4.0mm (5/32") Stainless rivet capacity
- Stroke length: 16mm • Net weight: 1.5kg
- Traction power: 2303 lbf (M7-PA301)



AIR HYDRAULIC RIVETER

- Nozzle sizes : 2.4, 3.2, 4.0, 4.8, 6.0 & 6.4mm
- 6.4mm (1/4") Aluminium & steel rivet capacity
- 4.8mm (3/16") Stainless rivet capacity
- Stroke length: 14mm • Net weight: 1.8kg
- Traction power: 3534 lbf (M7-PA201)



RIVETER ATTACHMENT

- Nozzle sizes : 2.4, 3.2, 4.0, 4.8mm
- Net Weight : 0.3kg
- Hex Shank : 1/4"
- For use with 3/8" cordless drills (M7A-PA9048P)



RIVET NUT ATTACHMENT

- Mandrel Sizes : M3, M4, M5, M6
- Net Weight : 0.28kg
- Hex Shank : 1/4"
- For use with 3/8" cordless drills • (M7A-PB9006P)



AIR NEEDLE SCALER

- Blows per minute : 5500 BPM
- Net weight : 1.3kg
- Needle size : 3x123mm (12 per set)
- Overall length : 290mm (M7-SN1288)



AIR PISTOL NEEDLE SCALER

- Blows per minute : 3700 BPM • Net weight : 2.8kg • Needle size : 3x180mm (19 per set) • Overall length : 330mm (M7-SN2110)



AIR HAMMER SET

- Blows per minute : 3200 BPM
- Shank : Round 10.2mm
- Includes 5 piece Chisel kit (M7-SC0517C)



AIR FLUX CHIPPER

- Blow per minute : 4000 BPM
- Shank : Square 0.510" (13mm)
- Net weight : 1.33kg (M7-SN1032)



COMPACT AIR DIE GRINDER

- Length : 155mm • Net weight : 0.38kg
- Includes 1/4" & 1/8" collets
- Free speed : 25,000 RPM
- Rated power : 0.3 HP (M7-QA111B)



AIR DIE GRINDER

- Length : 190mm • Net weight : 0.65kg
- Includes 1/4" & 1/8" collets
- Free speed : 20,000 RPM
- Rated power : 0.9 HP
- Heavy duty model (M7-QA211B)
- Die grinder with 6mm collet also available



90° ANGLE HEAD AIR DIE GRINDER

- Head height : 73mm
- Includes 1/4" & 1/8" collets
- Free speed : 19,000 RPM
- Rated power : 0.3 HP
- Net weight : 0.51kg (M7-QA611B)



EXTENDED AIR DIE GRINDER

- Length : 280mm • Net weight : 0.63kg
- Includes 1/4" & 1/8" collets
- Free speed : 25,000 RPM
- Rated power : 0.3 HP (M7-QA315B)



AIR ENGRAVING PEN

- Blows per minute : 13000 BPM
- Net weight : 0.23kg (M7-QA511)



AIR SAW SET

- Quick change saw blade holder
- Adjustable guide controls depth of cut
- 10mm stroke length
- Kit includes: 6x 24T saw blades, 6x 32T saw blades, 6 piece File set, Inline oiler (M7-QD291N)



EXTRA HEAVY DUTY AIR ANGLE GRINDERS

- Free speed : 11000 RPM
- 1.3 HP motor • Safety lever throttle
- Heavy duty gears • One piece housing

Part No.	Diameter	Spindle
M7-QB7114M	100mm	M10x1.5
M7-QB7245M	115mm	M14x2.0
M7-QB7215M	125mm	M14x2.0

Grinding wheel not included



Chisels supplied separately :
Blade chisel (M7A-SN9201)
Point chisel (M7A-SN9203)



AIR CHIPPING HAMMERS

- Hex shank : 0.58" (15mm)
- Forged steel body provides industrial level quality and durability

Part No.	Blows Per Minute	Stroke Length	Overall Length
M7-SN3222	2300	78mm	373mm
M7-SN3223	1900	119mm	419mm
M7-SN3224	1700	142mm	445mm



RANDOM ORBITAL AIR SANDER

- Self generated vacuum
- Pad diameter : 150mm
- Orbit : 5mm
- Free speed : 10,000 RPM
- Net weight : 0.68kg (M7-QB55602)



AIR DRILL 1/2" CHUCK

- Keyless chuck
- Reversible
- Free speed : 800 RPM
- Length : 210mm
- Quiet, only 83DB
- Net weight : 1.7kg • (M7-QE841)



HIGH SPEED MINI AIR SANDER

- Pad diameters : 50mm & 75mm
- Free speed : 18,000 RPM
- Net weight : 0.5kg (M7-QP212)



BELT SANDERS

- Free speed : 16,000 RPM (M7-QB321 pictured)

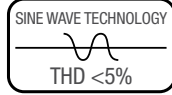
Part No.	Belt Size	Overall Length
M7-QB321	10 x 330mm	320mm
M7-QB322	20 x 520mm	430mm
M7-QB324	12.7 x 610mm	455mm

INDUSTRIAL QUALITY PETROL GENERATORS

TRADE SERIES

ITM Trade Series generators are equipped with a reliable AVR (Automatic Voltage Regulator) alternator utilising advanced electronic technology to provide a very pure energy supply with a THD (Total Harmonic Distortion) of <5%. This clean and pure output means they are suitable to power even the most delicate electronic devices.

- Powerful 4 stroke OHV engines
- Low oil sensor
- Digital multimeter display
- Large capacity fuel tanks

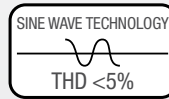


Model No.	TM510-2300	TM510-2800	TM510-3400	TM510-5500	TM510-6500
Engine HP	6HP	7HP	8HP	13HP	15HP
KVA	2.8	3.5	4	6.8	8.1
Max Watts	2,300	2,800	3,400	5,500	6,500
Rated Watts	2,000	2,500	3,200	5,000	6,000
Noise @ 7m Full Load	75dB	75dB	76dB	78dB	79dB
Outlets	2 x 15A	2 x 15A	2 x 15A	2 x 15A	2 x 15A
Fuel Tank	15L	15L	15L	25L	25L
Running Time - 50% load	19 hours	16 hours	14 hours	13 hours	12 hours
Starting System	Recoil	Recoil	Electric	Electric	Electric
Handle & Wheel Kit	No	No	No	Yes	Yes
Net Weight	41Kg	44Kg	52Kg	81Kg	85Kg



CONSTRUCTION SERIES

The Construction Series models have a simple push button electric start (battery included) with a convenient remote control which is perfect for the large property or worksite where the generator may not be close to the tool being powered.



All models come complete with a heavy duty handle and wheel kit, IP66 rated power outlets and RCD (Residual Current Device.) The construction series gens are perfect for the professional tradesman needing a tough yet reliable source of power.

Model No.	TM520-3400	TM520-5500	TM520-6500	TM520-8000
Engine HP	8HP	13HP	15HP	17HP
KVA	4	6.8	8.1	10
Max Watts	3,400	5,500	6,500	8,000
Rated Watts	3,200	5,000	6,000	7,500
Noise @ 7m Full Load	76dB	78dB	79dB	80dB
Outlets	1 x IP66	2 x IP66	2 x IP66	2 x IP66
Fuel Tank	15L	25L	25L	25L
Running Time - 50% load	14 hours	13 hours	12 hours	10 hours
Starting System	Electric w/ Remote	Electric w/ Remote	Electric w/ Remote	Electric w/ Remote
Handle & Wheel Kit	Yes	Yes	Yes	Yes
Net Weight	54Kg	83Kg	88Kg	95Kg





350MM COLD CUT T.C.T. SAW

- Cuts through steel up to 120mm x 120mm
- Offers an accurate, fast & clean cold cut
- 3HP 240V motor, 1450rpm • 90° - 45° swivel vice
- Supplied with T.C.T. mild steel blade (S14)



125MM CAPACITY PORTABLE BANDSAW

- Taiwanese made machine • Swivel head 0° to 60°
- 300W, 240V • Variable speed 23 - 75mpm
- Round cut capacity: 90° : 125mm, 45° : 70mm
- Comes complete with blade (UE125DV)



300MM x 180MM CAPACITY BANDSAW

- Taiwanese made machine • Hydraulic downfeed
- 1HP, 240V • 4 speed belt drive • Recirculating coolant system
- Round cut capacity: 90° : 180mm, 45° : 110mm
- Emergency stop safety switch (UE712A)



170MM x 170MM CAPACITY SWIVEL HEAD BANDSAW

- Swivel head 0° to 60° • Taiwanese made machine
- Hydraulic down feed • 1HP, 240V, 1 speed
- Recirculating coolant system • Round cut capacity: 90° : 170mm, 45° : 120mm (WP210SH-1)



220MM x 220MM CAPACITY SWIVEL HEAD BANDSAW

- Swivel head 0° to 60° • Taiwanese made machine
- Hydraulic down feed • 1.5HP, 240V, 1 speed
- Round cut capacity: 90° : 227mm, 45° : 150mm (WP270SH-1)



310MM x 210MM CAPACITY 2 WAY SWIVEL HEAD BANDSAW

- 2 way swivel head 0° to 60° • Taiwanese made machine
- Hydraulic down feed • 2HP, 415V • 2 speed • Round cut capacity : 90° : 250mm, 45° : 200mm (WP310DS-3)



400MM X 200MM CAPACITY 2 WAY SWIVEL HEAD BANDSAW

- 2 way swivel head 0° to 60° • Italian made machine
- Hydraulic down feed • 2HP, 415V • 2 speed • Round cut capacity : 90° : 300mm, 45° : 240mm (MB-411CSO-3)



550MM X 400MM CAPACITY SEMI AUTO SWIVEL HEAD SAW

- 2 way swivel head 0° to 60° • Italian made machine
- Semi-Auto Operation • 2HP, 415V • 2 speed • Round cut capacity : 90° : 400mm, 45° : 400mm (MB-420DI-3)



620MM X 450MM CAPACITY SEMI AUTO SWIVEL HEAD SAW

- 2 way swivel head 0° to 60° • Italian made machine
- Semi-Auto Operation • 2HP, 415V • 2 speed • Round cut capacity : 90° : 460mm, 45° : 450mm (MB-650DI-3)



250MM SWIVEL HEAD COLDSAW

- Italian made quality • Double vice • Swivel head 45° left & right • 1.2HP, 240V, 1 Speed • Round cut capacity : 90° : 70mm, 45° : 65mm (NEW250DV-1)



300MM SWIVEL HEAD COLDSAW

- Italian made quality • Swivel head 45° left & right • 2HP, 240V, 1 Speed • Round cut capacity : 90° : 90mm, 45° : 90mm (TRS300-1)



350MM SWIVEL HEAD COLDSAW

- Italian made quality • Double vice • Swivel head 45° left & right • 3.2HP, 415V • 2 Speed • Round cut capacity : 90° : 110mm, 45° : 80mm (NEW350EDV-3)

Holemaker

Drilling Solutions By **ITM**



PRO 35 MAGNETIC DRILL

- Quality, Compact & Robust European Made Machine
- Lightweight, only 10kg!
- Ideal for onsite & overhead tasks
- Capacity (diameter) 35mm
- Capacity (depth) 52mm
- Gravity feed coolant system with magnetically attached bottle
- Dual rail slide system
- Comes complete in plastic carry case (HMPRO35)



Holemaker

Drilling Solutions By **ITM**

PRO 40 MAGNETIC DRILL

- Durable & Versatile, European Made Machine
- Capacity (diameter) 40mm
- Capacity (depth) 52mm
- Optional 13mm twist drill chuck for use with standard drill bits
- Through cutter coolant system
- Comes complete in metal carry case
- 12.5kg (HMPRO40)



Holemaker

Drilling Solutions By **ITM**

PRO 36AD MAGNETIC DRILL

- Ultra low profile
- 176mm constant working height
- Lightweight, only 9.5kg!
- Capacity (diameter) 36mm
- Capacity (depth) 30mm
- Utilizes standard 3/4" shank cutters (HMPRO36AD)



Holemaker

Drilling Solutions By **ITM**

PRO 50 MAGNETIC DRILL

- Versatile & Multi-Purpose, European Made Machine
- Capacity (diameter) 52mm
- Capacity (depth) 52mm
- #2 Morse taper spindle, for use with drill chucks, taper shank drills, reamers etc.
- Powerful 1260W motor
- 2 speed gearbox
- 16.5kg
- Comes complete in metal carry case (HMPRO50)



Holemaker

Drilling Solutions By **ITM**

PRO 65 MAGNETIC DRILL

- European made
- Capacity (diameter) 65mm
- Capacity (depth) 75mm
- Dual rail slide system
- Powerful 1500W motor
- 2 speed gearbox
- Lightweight, only 17kg
- Comes complete in plastic carry case (HMPRO65)



Holemaker

Drilling Solutions By **ITM**

SPECIAL 60 MAGNETIC DRILL

- #2 Morse taper
- European made
- Capacity (diameter) 60mm
- Capacity (depth) 75mm
- 23mm #2MT drill bit capacity
- M20 Tapping Capacity
- 2 speed variable gearbox
- Powerful 1500W Italian motor
- Electronic clutch • Overload and overheat protection
- Tilt sensor • 360-degree visual monitoring system
- Intuitive top mount control panel • Very light weight 17kg (HMSPECIAL60)



Holemaker

Drilling Solutions By **ITM**

SPECIAL 80 MAGNETIC DRILL

- #3 Morse taper spindle
- European made
- Capacity (diameter) 80mm
- Capacity (depth) 110mm
- 25mm #3MT drill bit capacity
- M24 Tapping Capacity
- 2 speed variable gearbox
- Powerful 1500W Italian motor
- Electronic clutch • Overload and overheat protection
- Tilt sensor • 360-degree visual monitoring system
- Intuitive top mount control panel • Very light weight 18kg (HMSPECIAL80)



Holemaker

Drilling Solutions By **ITM**

SPECIAL 110 MAGNETIC DRILL

- #3 Morse taper spindle
- European made
- Capacity (diameter) 110mm
- Capacity (depth) 110mm
- 32mm #3MT drill bit capacity
- M30 Tapping Capacity
- 4 speed variable gearbox
- Powerful 2150W Italian motor
- Electronic clutch • Overload and overheat protection
- Tilt sensor • 360-degree visual monitoring system
- Intuitive top mount control panel • Very light weight 25kg (HMSPECIAL110)



Holemaker

Drilling Solutions By **ITM**

SPECIAL 140 MAGNETIC DRILL

- #4 Morse taper spindle
- European made
- Capacity (diameter) 140mm
- Capacity (depth) 110mm
- 47mm #4MT drill bit capacity
- M42 Tapping Capacity
- 4 speed variable gearbox
- Powerful 2150W Italian motor
- Electronic clutch • Overload and overheat protection
- Tilt sensor • 360-degree visual monitoring system
- Intuitive top mount control panel • Very light weight 31kg (HMSPECIAL140)



Holemaker

Drilling Solutions By **ITM**

GOLD SERIES ANNULAR CUTTERS

- Available in sizes 12 - 60mm diameter
- Available in 25, 50 & 75mm depth of cut
- Titanium nitride coating
- Universal shank
- M2AL high speed steel material
- Multi-cut geometry



Part No.	Diameter	Depth
AT1225	12mm	25mm
AT1425	14mm	25mm
AT1625	16mm	25mm
AT1825	18mm	25mm
AT2025	20mm	25mm
AT2225	22mm	25mm
AT2425	24mm	25mm

Part No.	Diameter	Depth
AT1250	12mm	50mm
AT1450	14mm	50mm
AT1650	16mm	50mm
AT1850	18mm	50mm
AT2050	20mm	50mm
AT2250	22mm	50mm
AT2450	24mm	50mm

Holemaker

Drilling Solutions By **ITM**

MAX T.C.T SERIES ANNULAR CUTTERS

- Available in sizes 12 - 200mm diameter
- Available in 35mm, 50mm, 75mm, 100mm, 150mm & 200mm depth of cut
- Suitable for drilling hard steels
- Less susceptible to breakage than standard HSS cutters, especially in larger diameters



Part No.	Diameter	Depth
MAX50-12	12mm	50mm
MAX50-14	14mm	50mm
MAX50-16	16mm	50mm
MAX50-18	18mm	50mm
MAX50-20	20mm	50mm
MAX50-22	22mm	50mm
MAX50-24	24mm	50mm

Part No.	Diameter	Depth
MAX75-14	14mm	75mm
MAX75-16	16mm	75mm
MAX75-18	18mm	75mm
MAX75-20	20mm	75mm
MAX75-22	22mm	75mm
MAX75-24	24mm	75mm
MAX75-26	26mm	75mm

BENCH & PEDESTAL DRILLS, PIPE BENDERS, VENTILATOR SETS



BENCH & PEDESTAL DRILLS

• Quality casting, construction & componentry • Emergency stop NVR safety switch • Chuck safety guard • Drill chuck & arbor • Drill drift (on MT models)



• 13mm capacity • 13mm B16 chuck • 1/2HP, 240V motor • 5 speed • 680mm height • 27kg weight (TD1013)



• 16mm capacity • 16mm B16 chuck • #2 MT Spindle • 1/2HP, 240V motor • 16 speed • 980mm height • 50kg weight (TD1316)



• 16mm capacity • 16mm B16 chuck • #2 MT Spindle • 3/4HP, 240V motor • 16 speed • 1580mm height • 60kg weight (TD1316F)



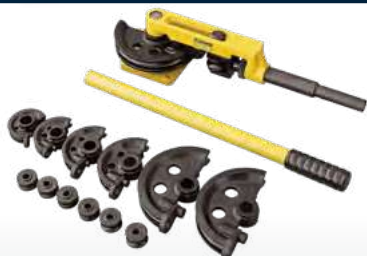
• 20mm capacity • 20mm B22 chuck • #3 MT Spindle • 1HP, 240V motor • 12 speed • 1600mm height • 80kg weight (TD1420F)



• 25mm capacity • 20mm B22 chuck • #3 MT Spindle • 2HP, 240V motor • 12 speed • 1710mm height • 120kg weight (TD1825F)



• 32mm capacity • 20mm B22 chuck • #4 MT Spindle • 2HP, 240V motor • 12 speed • 1710mm height • 145kg weight (TD2032F)



1" TUBE BENDER

• 3/8", 1/2", 9/16", 5/8", 3/4", 7/8", 1" Cast steel formers
• 0° to 180° Bending angle
• Bench mountable
• Supplied in robust plastic carry case (TM810-025)



1" HYDRAULIC PIPE BENDER

• 3/8", 1/2", 3/4", 1" Cast steel formers • 0° to 90° Bending angle • 6,000kg force capacity • 150mm Stroke • Supplied in metal carry case (TM811-03025)



2" HYDRAULIC PIPE BENDER

• 1/2", 3/4", 1", 1-1/4" 1-1/2" & 2" cast steel formers
• 0° to 90° bending angle
• 13,000kg force capacity
• 250mm stroke • Heavy duty castor wheels (TM811-13075)



3" HYDRAULIC PIPE BENDER

• 1/2", 3/4", 1", 1-1/4", 1-1/2" 2", 2-1/2" & 3" cast formers
• 0° to 90° bending angle
• 20,000kg force capacity
• 290mm stroke • Heavy duty castor wheels (TM811-20075)



4" HYDRAULIC PIPE BENDER

• 1/2", 3/4", 1", 1-1/4", 1-1/2" 2", 2-1/2", 3" & 4" cast formers
• 0° to 90° Bending angle
• 20,000kg Force capacity
• 370mm Stroke • Heavy duty castor wheels (TM811-20100)

INDUSTRIAL WORKSHOP FANS

• Quality robust construction designed for everyday use in industrial workshops
• Zinc coated mesh
• Powder coated steel frame
• High output & quiet running
• 3 speed motor
• Oscillating function



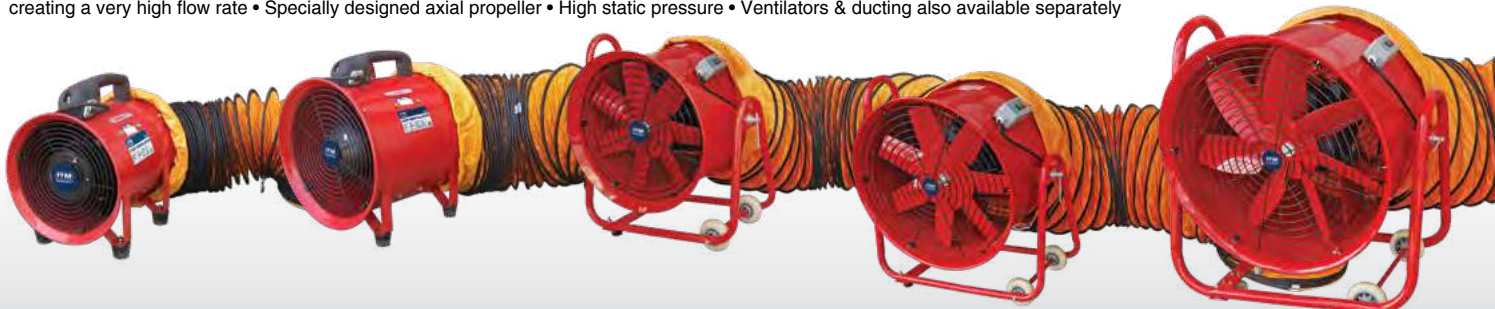
750mm diameter Pedestal Fan (TPF30)



750mm diameter Wall Mount Fan (TWF30)

PORTABLE VENTILATOR SETS

• Suitable for air/fume extraction or blowing fresh air • Ideal ventilation for workshops and confined areas • Includes 5 metre expandable ducting • Large capacity motor creating a very high flow rate • Specially designed axial propeller • High static pressure • Ventilators & ducting also available separately



• 200mm • 150W Motor
• 25m³/min Flow Rate (TPV200SET)

• 300mm • 550W Motor
• 60m³/min Flow Rate (TPV300SET)

• 400mm • 1500W Motor
• 128m³/min Flow Rate (TPV400SET)

• 500mm • 1500W Motor
• 138m³/min Flow Rate (TPV500SET)

• 600mm • 2200W Motor
• 290m³/min Flow Rate (TPV600SET)

Multitool INTERNATIONAL



150MM BENCH GRINDER WITH MULTITOOL BELT ATTACHMENT

- Powerful 370W induction motor • Capacitor start for maximum performance • 915mm x 50mm belt
- 178mm disc • 25mm wide grinding wheel
- Durable cast iron body (PO362-150)



200MM BENCH GRINDER WITH MULTITOOL BELT ATTACHMENT

- Powerful 600W induction motor • Capacitor start for maximum performance • 915mm x 50mm belt
- 178mm disc • 25mm wide grinding wheel • Durable cast iron body • Heavy duty tool rest (PO362-200)



250MM BENCH GRINDER WITH MULTITOOL BELT ATTACHMENT

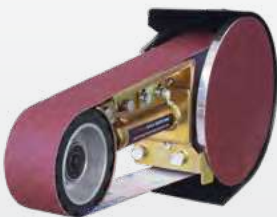
- Powerful 900W induction motor • Capacitor start for maximum performance • 1220mm x 50mm belt
- 178mm disc • 25mm wide grinding wheel • Durable cast iron body • Heavy duty tool rest (PO482-250)



250MM BENCH GRINDER WITH MULTITOOL BELT ATTACHMENT

- Powerful 900W induction motor • Capacitor start for maximum performance • 1220mm x 100mm belt
- 178mm disc • 25mm wide grinding wheel • Durable cast iron body • Heavy duty tool rest (PO484-250)

Multitool INTERNATIONAL



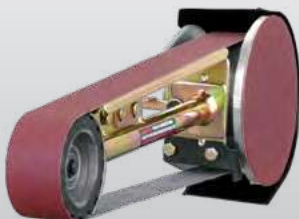
915 x 50MM BELT & DISC GRINDING ATTACHMENT

- Suits most bench grinders • Ideal for sharpening, sanding, polishing & more • 178mm sanding disc (PO362)



915 x 100MM BELT & DISC GRINDING ATTACHMENT

- Suits most bench grinders • Ideal for sharpening, sanding, polishing & more • 178mm sanding disc (PO364)



1220 x 50MM BELT & DISC GRINDING ATTACHMENT

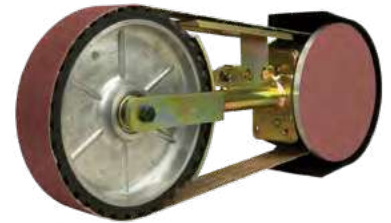
- Suits most 200mm & 250mm bench grinders • Ideal for sharpening, sanding, polishing & more • 178mm sanding disc (PO482)



1220 x 100MM BELT & DISC GRINDING ATTACHMENT

- Suits most 200mm & 250mm bench grinders • Ideal for sharpening, sanding, polishing & more • 178mm sanding disc (PO484)

Multitool INTERNATIONAL



1220 x 50MM BELT & DISC GRINDING ATTACHMENT

- 200mm contact wheel • Suits most 200mm & 250mm bench grinders • Ideal for sharpening, sanding, polishing & more • 178mm sanding disc (PO8CW)



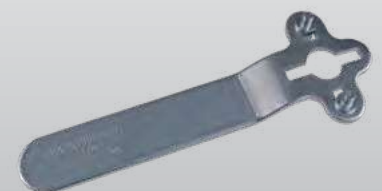
SHARPENING JIG

- Sharpening jig accessory enables a professional result when sharpening chisels, planer blades, and screwdrivers • For sharpening chisels up to 51mm, hand plane blades up to 60mm and power planer blades up to 82mm • Slotted screwdrivers up to 10mm square can also be retipped • Fits all Multitools except 8CW (POJIG)



MITRE TABLE ATTACHMENT

- Suitable for grinding ends square and adjust lengths and angles • For use with all Multitool models • Table can be tilted up 5°, down 50° • Table size 110 x 204mm (POMTA)



ADJUSTABLE PIN SPANNER

- Fits most grinders and saws (POSPANNER)

BENCH GRINDERS BOLT CUTTERS



150MM BENCH GRINDER

- 370W • 25mm width grinding wheels 36 & 60 grit • Durable cast iron body
- Vibration absorbing pads (TM400-150)

200MM BENCH GRINDER

- 600W • 25mm width grinding wheels 36 & 60 grit • Durable cast iron body
- Vibration absorbing pads • Heavy duty tool rests (TM400-200)

250MM BENCH GRINDER

- 900W • 25mm width grinding wheels 36 & 60 grit • Durable cast iron body
- Vibration absorbing pads • Heavy duty tool rests (TM400-250)

200MM BUFFING MACHINE

- 550W • 14mm width mop wheels
- Durable cast iron body • Vibration absorbing pads (TM402-200)

BUFFING COMPOUNDS

- Different metals have varying characteristics and to achieve the best results, it is essential that the correct compounds and buffs are selected



GREEN COMPOUND

- For high gloss finish on steel, stainless steel and copper • Use with a loose leaf mop (TM404-001)



GREY COMPOUND

- Used to cut back light scratch marks on copper, brass and stainless steel prior to polishing • Use only with a stitched mop (TM404-002)



RED COMPOUND

- General purpose polishing of copper, brass, aluminium and most other metals • Can be used with a loose leaf or stitched mop (TM404-003)



WHITE COMPOUND

- For high quality finishes on aluminium and aluminium alloys
- Use with a loose leaf mop (TM404-004)



TAPERED SPINDLES

- Available in both left hand and right hand thread types • Fit the R/H spindle to the right side of the bench grinder as seen when facing the front of the bench grinder

Part No.	Thread	Bench Grinder To Suit
TM407-023	12mm Left Hand	150mm
TM407-024	12mm Right Hand	150mm
TM407-025	16mm Left Hand	200mm, 250mm
TM407-026	16mm Right Hand	200mm, 250mm

BENCH GRINDER STANDS

- For use with TM400-150, TM400-200, TM400-250, TM402-200



Part No.	Description
TM403-010	Bench Grinder Stand
TM403-012	Premium Bench Grinder Stand Without Emergency Stop Switch
TM403-014	Premium Bench Grinder Stand With Emergency Stop Switch



POLISHING MOPS

Part No.	Diameter	Description
TM405-001	150mm	50 Fold Loose Leaf
TM405-002	200mm	50 Fold Loose Leaf
TM405-003	150mm	Stitched
TM405-004	200mm	Stitched

BENCH GRINDING WHEELS

- ALUMINIUM OXIDE, for general purpose grinding
- SILICONE CARBIDE, for precision grinding



Part No.	Diameter	Grit	Description
TM406-001	150mm	36	Aluminium Oxide
TM406-002	150mm	60	Aluminium Oxide
TM406-003	200mm	36	Aluminium Oxide
TM406-004	200mm	60	Aluminium Oxide
TM406-005	150mm	80	Silicone Carbide
TM406-006	200mm	80	Silicone Carbide
TM407-009	250mm	36	Aluminium Oxide
TM407-010	250mm	60	Aluminium Oxide



SURFACE CONDITIONING BELTS

- 915mm x 50mm
- For use with PO362

Part No.	Abrasive Level
TM408-003	Polishing
TM408-001	Fine
TM408-002	Medium



ABRASIVE SANDING BELTS

- 915mm x 50mm
- For use with PO362

Part No.	Belts Per Pack	Grit	Abrasive Level
TM408-008	3	400	Very Fine
TM408-007	3	240	Fine
TM408-006	3	150	Medium
TM408-005	3	80	Coarse
TM408-004	3	40	Very Coarse

Part No.	Belts Per Pack	Grits
TM408-009	5	40, 80, 150, 240, 400



ALUMINIUM OXIDE SANDING DISCS

- 175mm
- For use with PO362, PO364, PO482, PO484

Part No.	Discs Per Pack	Grit	Abrasive Level
TM408-011	4	60	Coarse
TM408-012	4	100	Medium

Part No.	Includes
TM408-013	Hook & Loop Backing Pad
TM408-010	40, 60, 800, 100 Grit & Backing Pad

HAND RIVETER

- Durable steel body and handles
- Chrome molybdenum Jaws
- Comfortable rubber grip
- Nozzle sizes : 2.4mm, 3.2mm, 4.0mm, 4.8mm (TM620-002)



HEAVY DUTY HAND RIVETER

- Premium cast aluminium body
- Chrome molybdenum steel collet
- Durable powder coat finish
- Comfortable rubber grip
- 4 Nozzles included: 2.4mm, 3.2mm, 4.0mm, 4.8mm (TM620-004)



ROTATING HEAD HAND RIVETER

- Premium cast aluminium body
- Chrome molybdenum steel collet
- 360° Rotating head for hard to reach places
- Durable powder coat finish
- Comfortable rubber grip
- 4 Nozzles included: 2.4mm, 3.2mm, 4.0mm, 4.8mm (TM620-006)



NUTSERT HAND RIVETER

- Premium quality
- Cast aluminium construction
- Easy change mandrels
- Sets 3, 4, 5 & 6mm rivet nuts (TM620-014)



HEAVY DUTY COMPACT HAND RIVETER

- 4 Nozzles included: 2.4mm, 3.2mm, 4.0mm & 4.8mm
- Spring loaded handle for automatic ejection of mandrel
- Smooth, easy one-handed operation
- High grade aluminium construction
- Chrome Molybdenum heat treated 3 jaw system (TM620-005)



EASY PULL TWIN HANDLE RIVETER

- Chrome molybdenum steel collet
- 3 Jaw system
- 5 Nozzles : 3.2mm, 4.0mm, 4.8mm, 6.0mm & 6.4mm
- Premium quality
- Alloy body & Rubber grip handle (TM620-008)



SHORT ARM HAND RIVETER

- Premium quality
- Strong aluminium alloy body
- High impact long lasting PVC handle
- Chrome molybdenum steel collet
- 3 Jaw system
- Durable powder coat finish
- 5 Nozzles : 3.2mm, 4.0mm, 4.8mm, 6.0mm & 6.4mm (TM620-010)



HEAVY DUTY LAZY TONG RIVETER

- Premium quality
- Single pull action designed for fast repetitive applications
- Strong aluminium alloy body
- Chrome molybdenum steel collet
- 3 Jaw system
- 5 Nozzles : 3.2mm, 4.0mm, 4.8mm, 6.0mm & 6.4mm (TM620-012)



C CLAMP REGULAR TIP 275MM (TM603-101)



C CLAMP SWIVEL PAD 275MM (TM603-102)



C CLAMP SWIVEL PAD 450MM (TM603-103)



CURVED JAW 175MM (TM603-201)



CURVED JAW 250MM (TM603-202)



CURVED JAW WITH RUBBER GRIP 250MM (TM603-203)



STRAIGHT JAW 250MM (TM603-301)



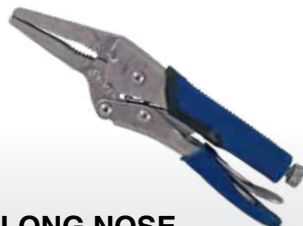
STRAIGHT JAW WITH RUBBER GRIP 250MM (TM603-302)



LONG NOSE 165MM (TM603-401)



LONG NOSE WITH RUBBER GRIP 165MM (TM603-402)



SHEET METAL LOCKING PLIER 200MM (TM603-500)



WELDING CLAMP LOCKING PLIER 200MM (TM603-600)





FORGED STEEL C CLAMPS

- Tempered & hot forged steel
- Nickel & chrome plating
- Hardened Acme spindle • Swivel pad ensures even pressure is applied

Part No.	Span x Depth	Clamping Force
EC-BC4	100x50mm	900kg
EC-BC5	125x65mm	850kg
EC-BC6	150x75mm	1000kg
EC-BC8	200x100mm	1000kg
EC-BC10	250x115mm	1200kg
EC-BC12	300x125mm	1500kg



FORGED STEEL F CLAMPS

- Premium quality forged steel clamps • Tempered & hot forged steel • Nickel & chrome plating

Part No.	Span x Depth	Clamping Force
EC-G16CS	160x80mm	300kg
EC-G20CS	200x100mm	450kg
EC-G25CS	250x120mm	550kg
EC-G30CS	300x140mm	670kg
EC-G40CS	400x175mm	1000kg
EC-G60CS	600x175mm	1000kg
EC-G80CS	800x175mm	1000kg
EC-G100CS	1000x175mm	1000kg



HEAVY DUTY FORGED STEEL F CLAMPS

- Larger rail sizes 30x15mm
- For heavy duty applications
- Changeable clamping heads
- Socket drive handle
- Up to 1000mm span available

Part No.	Span x Depth	Clamping Force
EC-GS30C	300x140mm	1200kg
EC-GS40C	400x120mm	1200kg
EC-GS50C	500x140mm	1200kg
EC-GS60C	600x120mm	1200kg
EC-GS80C	800x140mm	1200kg
EC-GS100C	1000x120mm	1200kg



QUICK ACTION FORGED STEEL F CLAMPS

- Ratchet type lever prevents overloading & resists vibration • For high pressure, fast action clamping purposes

Part No.	Span x Depth	Clamping Force
EC-G16L	160x80mm	300kg
EC-G20L	200x100mm	350kg
EC-G30L	300x140mm	500kg
EC-G40L	400x120mm	550kg
EC-G50L	500x120mm	550kg



PIVOT HANDLE FORGED STEEL F CLAMPS

- The comfortable pivot handle makes it easier to achieve maximum clamping pressure & allows faster clamping in restricted working areas

Part No.	Span x Depth	Clamping Force
EC-REG20C	200x100mm	670kg
EC-REG30C	300x140mm	670kg
EC-REG40C	400x175mm	700kg
EC-REG60C	600x175mm	700kg



EXTRA HEAVY DUTY FORGED STEEL F CLAMPS

- Extra large rail size 40x20mm
- For heavy duty applications
- Changeable clamping heads
- Socket drive handle
- Up to 1500mm span available

Part No.	Span x Depth	Clamping Force
EC-SS30C	300x175mm	2200kg
EC-SS40C	400x175mm	2200kg
EC-SS50C	500x175mm	2200kg
EC-SS60C	600x175mm	2200kg
EC-SS100C	1000x175mm	2200kg
EC-SS150C	1500x175mm	2200kg



CAST IRON F CLAMPS

- Malleable cast jaws for strength and durability • Serrated slip resistant profiled rail
- Rubber grip handle • Removable soft pads

Part No.	Span x Depth
TC-F200120	200x120mm
TC-F250120	250x120mm
TC-F300120	300x120mm
TC-F400120	400x120mm
TC-F500120	500x120mm
TC-F600120	600x120mm
TC-F800120	800x120mm



CAST IRON C CLAMPS

- Malleable cast jaws for strength and durability

Part No.	Span x Depth
TC-C075	75 x 47mm
TC-C100	100 x 54mm
TC-C150	150 x 68mm
TC-C200	200 x 75mm
TC-C250	250 x 95mm
TC-C300	300 x 105mm



BAR CLAMP & SPREADER

- Durable plastic construction
- Removable rubber pressure pads
- Rubber grip handle • Quick release lever • Head can be placed on opposite end to create a spreader

Part No.	Span x Depth
TC-6PT	150 x 85mm
TC-12PT	300 x 85mm
TC-18PT	450 x 85mm
TC-24PT	600 x 85mm



CAST ALLOY BAR CLAMPS MULTI FUNCTION

- Cast alloy construction • 400KG clamping pressure • Head can be reversed to create a spreader • Removable soft pads • Spring loaded pressure jaw

Part No.	Span x Depth
EC-TC-6A	150x85mm
EC-TC-12A	300x85mm
EC-TC-18A	450x85mm
EC-TC-24A	600x85mm



FORGED HANDLE BOLT CUTTERS

- Two stage heat treated precision machined jaws for extended cutting and resilience
- Adjustable arms
- Solid forged steel handles for durability
- Non-slip comfort rubber grips
- Built in stops for added safety

Part No.	Length
TM600-035	350mm
TM600-045	450mm
TM600-060	600mm
TM600-075	750mm
TM600-090	900mm
TM600-105	1050mm



EXTRA HEAVY DUTY BOLT CUTTERS

- Optimal performance for cutting high tensile material
- Two stage heat treated, precision machined jaws for extended cutting and resilience
- Adjustable arms
- Solid forged steel handles for durability
- Built in stops for added safety

Part No.	Length
TM601-075	750mm
TM601-090	900mm
TM601-105	1050mm

FABRICATED STEEL BENCH VICES

- Precision machined knurled jaws with V-Groove • Large diameter screw • Extra heavy-duty • Precise sliding jaw



STRAIGHT JAW

Jaw Width	Weight	Part No.
100mm	10.5kg	TM102-100
125mm	18.5kg	TM102-125
150mm	22.6kg	TM102-150
200mm	37.0kg	TM102-200



OFFSET JAW

Jaw Width	Weight	Part No.
100mm	11.2kg	TM104-100
125mm	20.3kg	TM104-125
150mm	25.0kg	TM104-150
200mm	60.0kg	TM104-200



MULTI-PURPOSE BENCH VICE

- Jaw width : 135mm • Jaw opening : 135mm • Pipe holding capacity : 25mm - 65mm • 18.5kg • Hardened & tempered jaws • 360° Rotation with safety locking nuts • 360° Swivel base • Hardened anvil (TM101-125)



WORKSHOP BENCH VICES

- Hardened steel jaws • Close grained cast iron body
- Integrated anvil for shaping and beating

Jaw Width	Weight	Part No.
100mm	7kg	TM098-100
125mm	10kg	TM098-125
150mm	14kg	TM098-150
200mm	22kg	TM098-200



PROFESSIONAL MECHANICS BENCH VICES

Jaw Width	Weight	Part No.
75mm	7.5kg	TM100-075
100mm	10.0kg	TM100-100
125mm	15.5kg	TM100-125
150mm	18.0kg	TM100-150
200mm	31.0kg	TM100-200

MAGNETIC VICE JAWS

- Easy to use, simply place over existing jaws and 2 magnetic tabs hold jaws in place • Protects work piece from scoring or marking • Supplied as a pair



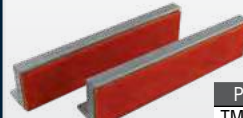
ALUMINIUM FACE

Part No.	To Suit
TM120-100	100mm (4") Bench Vices
TM120-125	125mm (5") Bench Vices
TM120-150	150mm (6") Bench Vices



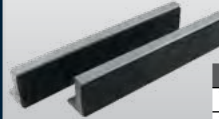
ALUMINIUM PRISM FACE

Part No.	To Suit
TM121-100	100mm (4") Bench Vices
TM121-125	125mm (5") Bench Vices
TM121-150	150mm (6") Bench Vices



FIBRE FACE

Part No.	To Suit
TM122-100	100mm (4") Bench Vices
TM122-125	125mm (5") Bench Vices
TM122-150	150mm (6") Bench Vices



RUBBER FACE

Part No.	To Suit
TM123-100	100mm (4") Bench Vices
TM123-125	125mm (5") Bench Vices
TM123-150	150mm (6") Bench Vices



100MM CROSS VICE

- Jaw width : 110mm • Jaw opening : 100mm
- X movement : 85mm • Y movement : 110mm
- Net weight : 7kg • Cast iron body • Machined steel jaws (TM130-100)



150MM CROSS VICE

- Jaw width : 160mm • Jaw opening : 150mm
- X movement : 160mm • Y movement : 155mm
- Net weight : 14.5kg • Cast iron body • Machined steel jaws (TM130-150)



DRILL PRESS VICES

- Cast iron body • Machined steel jaws • Great for machine shops, fabrication workshops & tool rooms

Jaw Width	Jaw Height	Capacity	Weight	Part No.
78mm	19mm	86mm	1.7kg	VDP078
102mm	21mm	105mm	3.2kg	VDP102
150mm	28mm	150mm	7.2kg	VDP150

HINGED PIPE VICES

- Hardened steel jaws
- Close grained cast iron body

Pipe Diameter	Part No.
8 - 68mm	TM114-068
8 - 78mm	TM114-078
13 - 120mm	TM114-120



CHAIN PIPE VICES

- Hardened steel jaws
- Close grained cast iron body

Pipe Diameter	Part No.
30-100mm	TM115-100
40-160mm	TM115-160
40-230mm	TM115-230



PARTS CABINETS

- Highest quality & heavy duty, robust parts cabinets designed for every day industrial use.
- Metal frame construction using 0.8mm galvanised steel.
- ABS High strength plastic drawers. Oil, acid and impact resistant.
- Large range of sizes and styles.
- Drawers come with dividers & contents description slip.

DIVIDERS

- Packs of 10

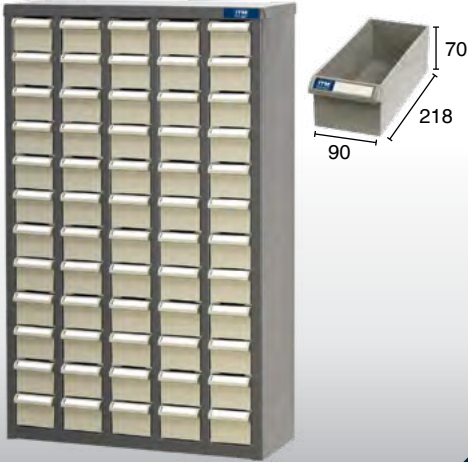
Description	Part No.
10x A4 Series Dividers	PB-A4DIVIDER
10x A5 Series Dividers	PB-A5DIVIDER
10x A6 Series Dividers	PB-A6DIVIDER
10x A7 Series Dividers	PB-A7DIVIDER
10x A8 Series Dividers	PB-A8DIVIDER
10x HD Series Dividers	PB-HDDIVIDER

Divider



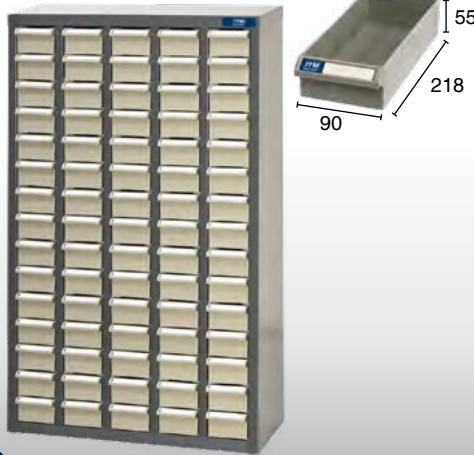
A8 SERIES

- 60 drawers • 10kg capacity per drawer • Slots for 3x dividers • 1x divider supplied per drawer
- 586W x 222D x 937H (PB-A8560)



ST1 SERIES

- 75 drawer • 10kg capacity per drawer • Slots for 3x dividers • 1x divider supplied per drawer • 586W x 222D x 937H (PB-ST1575)



ST2 SERIES

- 60 drawer • 10kg capacity per drawer • Slots for 3x dividers • 1x divider supplied per drawer • 586W x 222D x 937H (PB-ST2460)



A5 SERIES

- Large capacity • Transparent PS plastic window • 10kg capacity per drawer • Slots for 5x dividers • 1x divider supplied per drawer



PB-A5336
36 DRAWERS
586W x 290D x 937H

A6 SERIES

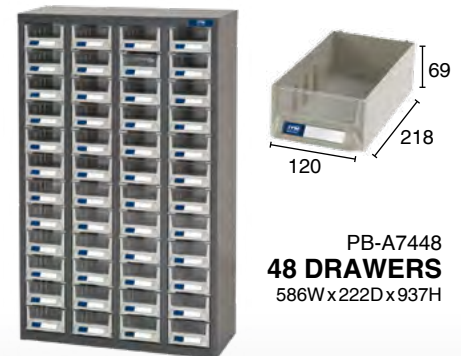
- 10kg capacity per drawer • Slots for 3x dividers • 1x divider supplied per drawer



PB-A6330H
30 DRAWERS
533W x 265D x 937H

A7 SERIES

- Transparent PS plastic window • 10kg capacity per drawer • Slots for 3x dividers • 1x divider supplied per drawer



PB-A7448
48 DRAWERS
586W x 222D x 937H



PB-A5336D
36 DRAWERS
586W x 340D x 970H
with lockable doors



PB-A6330HD
30 DRAWERS
533W x 313D x 970H
with lockable doors



PB-A7448D
48 DRAWERS
586W x 270D x 970H
with lockable doors



24 PIECE SET

- Cold Chisels: 125 x 6mm, 125 x 8mm, 140 x 10mm, 150 x 13mm, 163 x 16mm, 175 x 19mm, 190 x 22mm
- Pin Punches: 1/16", 3/32", 1/8", 5/32", 3/16", 1/4", 5/16"
- Starting Punches: 1/16", 1/8", 5/32", 3/16", 3/16", 1/4", 5/16"
- Centre Punches: 5/64", 5/32", 1/4" (GZ-33003)



14 PIECE SET

- Cold Chisels: 140 x 10mm, 150 x 13mm, 163 x 16mm, 175 x 19mm, 190 x 22mm
- Centre Punches: 5/32", 1/4"
- Pin Punches: 1/16", 1/8", 3/16"
- Drift Punches: 1/8", 5/32"
- Starting Punches: 5/16", 1/8" (GZ-33001)



16 PIECE SET

- Cold Chisels: 125 x 8mm, 150 x 13mm, 163 x 16mm, 175 x 19mm, 200 x 22mm
- Centre Punches: 1/8", 5/32", 1/4"
- Pin Punches: 1/8", 3/16", 1/4"
- Drift Punches: 3/16", 1/4"
- Starting Punches: 1/8", 3/16", 1/4" (GZ-33002)



26 PIECE SET

- Centre Punches: 5/32", 1/4", 3/8"
- Pin Punches: 3/32", 1/8", 5/32", 3/16", 1/4", 3/8"
- Starting Punches: 1/16", 1/8", 3/16", 1/4"
- Drift Punches: 1/8", 3/16", 1/4"
- Prick Punch: 5/32"
- Cold Chisels: 125 x 6mm, 125 x 8mm, 140 x 10mm, 150 x 13mm, 163 x 16mm, 175 x 19mm, 190 x 22mm, 200 x 25mm, 300 x 13mm (GZ-33004)



8 PIECE SET

- Cold Chisels: 150 x 13mm, 163 x 16mm, 175 x 19mm
- Centre Punch: 5/32"
- Pin Punches: 1/8", 3/16", 1/4"
- Starting Punches: 3/16" (GZ-33000)

HOLLOW & ARCH PUNCH SETS

For punching round holes in gasket material, leather, rubber, canvas, cardboard, plastic & other soft material.

HOLLOW PUNCH SET

- 6 piece set including 5, 6, 8, 10, 11, 12mm (GZ-26391)



ARCH PUNCH SET

- 7 piece set : 6, 10, 12, 16, 19, 22, 25mm (GZ-26441)



BRICK BOLSTERS

- High quality carbon steel
- Accurately hardened to BS 3066 specification
- 52 - 58 HRC cutting edge

WITHOUT GRIP

Part No.	Blade Width
GZ-32601	75mm
GZ-32602	100mm

WITH GRIP

Part No.	Blade Width
GZ-32621	75mm
GZ-32622	100mm

OCTAGONAL COLD CHISELS

- High quality forged alloy steel

WITHOUT GRIP

Part No.	Dimensions
GZ-32800	125 x 6mm
GZ-32801	125 x 8mm
GZ-32802	140 x 10mm
GZ-32803	150 x 13mm
GZ-32804	163 x 16mm
GZ-32805	175 x 19mm
GZ-32818	200 x 13mm
GZ-32825	200 x 19mm
GZ-32826	250 x 19mm
GZ-32812	300 x 19mm
GZ-32823	250 x 25mm
GZ-32814	300 x 25mm

WITH GRIP

Part No.	Dimensions
GZ-32841	250 x 19mm
GZ-32843	300 x 19mm
GZ-32842	250 x 25mm
GZ-32844	300 x 25mm

STEEL PUNCHES

NUMBER STAMPS



Part No.	Size
GZ-25902	3mm
GZ-25903	4mm
GZ-25904	5mm
GZ-25905	6mm
GZ-25906	8mm
GZ-25907	10mm
GZ-25908	12mm

LETTER STAMPS



Part No.	Size
GZ-26102	3mm
GZ-26103	4mm
GZ-26104	5mm
GZ-26105	6mm
GZ-26106	8mm
GZ-26107	10mm
GZ-26108	12mm



COLD CHISEL SET

- 6 pce • 125x6mm, 125x8mm, 140x10mm, 150x13mm, 163x16mm 175x19mm (GZ-32830)



PIN PUNCH SET

- Hardened and tempered carbon steel • 6 piece set : 2.4mm (3/32"), 3mm (1/8"), 4mm (5/32"), 5mm (3/16"), 6mm (1/4"), 8mm (5/16") (GZ-25612)



EXTRA LONG PIN PUNCH SET

- 200mm OAL • 5 piece set : 3mm (1/8"), 5mm (3/16"), 6mm (1/4"), 8mm (5/16"), 9.5mm (3/8") (GZ-25655)



CENTRE PUNCH SET

- Hardened and tempered carbon steel, designed for demanding industrial use • 5 piece set : 2mm (5/64"), 3mm (1/8"), 4mm (5/32"), 6mm (1/4"), 9.5mm (3/8") (GZ-25205)



NAIL PUNCH SET

- Hardened and tempered high grade carbon steel • 9.5mm (3/8") square head • 3 piece set : 0.8mm (1/32"), 1.6mm (1/16"), 2.4mm (3/32") (GZ-25366)

GROZ ENGINEER'S TOOL SETS



6 PIECE SET

- Inside Caliper 4" (100mm)
- Outside Caliper 4" (100mm)
- Screw Cutting Gauge
- Steel Rule 6" (150 mm)
- Pocket Scriber 3-1/2" (89mm)
- Centre Punch 5/32" (4mm) (GZ-03600)



7 PIECE SET

- Engineer's Precision Square 4" (100mm)
- Jenny Caliper 6" (150mm)
- Steel Rule 6" (150 mm)
- Double Ended Scriber 7-1/2" (190mm)
- Centre Punch (4mm)
- Spring Divider 4" (100mm)
- Adjustable Tap & Reamer Wrench 180mm (GZ-03601)

GROZ



SCRIBERS

- 55-60 HRC hardened tips

Part No.	Description
GZ-03210	190mm Double End Scriber, Steel Body, Straight & 90° Point
GZ-03211	230mm Double End Scriber, Steel Body, Straight & 90° Point
GZ-03214	89mm Pocket Scriber, Steel Body
GZ-03217	170mm Double End Scriber, Steel Body, Point And Chisel End
GZ-03221	150mm Pocket Scriber, Steel Body, Carbide Tip With Magnet

MACHINIST'S SQUARES

- High grade steel with hardened blade



Part No.	Blade Length	Part No.	Blade Length
GZ-01100	50mm	GZ-01104	200mm
GZ-01101	75mm	GZ-01106	250mm
GZ-01102	100mm	GZ-01107	300mm
GZ-01103	150mm		

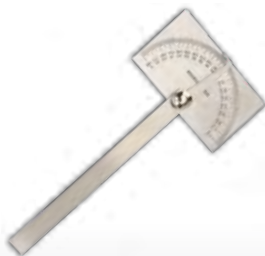
Part No.	Description
GZ-01110	Set including: 50, 75, 100, 150mm

GROZ



MULTI-USE RULE & GAUGE

Can be used as: 118° Drill point gauge, A protractor, Circle divider, Tap and drill table, 100mm ruler (GZ-01240)



DEGREE PROTRACTORS

- Stainless steel
- 150 mm blade

Part No.	Head Shape
GZ-01220	Round
GZ-01224	Rectangular



WHEEL DRESSERS

Suitable for ressing, truing, sharpening and removing glaze from solid abrasive wheels

Part No.	Size	Wheel Range	Length	Diameter
GZ-12070	0	500mm	255mm	32mm
GZ-12071	1	750mm	270mm	38mm



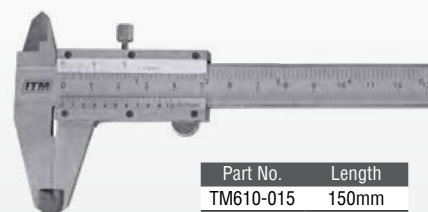
25MM OUTSIDE MICROMETER

- Enamelled frame • Ratchet stop and locking screw • Carbide tipped measuring faces
- Ratchet thimble • Durable plastic storage case • Range: 0 - 25mm • Graduation: 0.01mm
- Accuracy: +/- 0.04mm • Jaw reach: 29mm (TM610-525)



25MM DIGITAL OUTSIDE MICROMETER

- Enamelled frame • Carbide tipped measuring faces • Ratchet stop and locking screw • Dual mode digital display (metric/imperial) • Auto off feature • Durable plastic storage case • Range: 0 - 25mm • Graduation: 0.001mm (0.00005")
- Accuracy: +/- 0.004mm • Jaw reach: 23mm
- Battery included (TM610-625)



Part No.	Length
TM610-015	150mm
TM610-020	200mm
TM610-030	300mm

VERNIER CALIPERS

- Metric and imperial measurements
- Manufactured from hardened stainless steel
- Convenient thumb screw locking mechanism
- Suitable for inside, outside, depth and step measurements • Durable plastic storage case
- Graduation: 1mm intervals • Lower resolution: 0.05mm • Accuracy: +/- 0.03mm

GROZ

SPRING CALIPERS & DIVIDERS

- Constructed from high grade steel
- Divider points are hardened 50-55 HRC



SPRING INSIDE CALIPERS

Part No.	Arm Length
GZ-01401	100mm
GZ-01402	150mm
GZ-01403	200mm
GZ-01404	250mm
GZ-01405	300mm



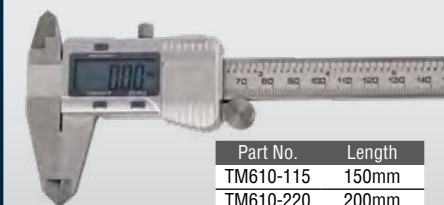
SPRING OUTSIDE CALIPERS

Part No.	Arm Length
GZ-01411	100mm
GZ-01412	150mm
GZ-01413	200mm
GZ-01414	250mm
GZ-01415	300mm
GZ-01828	600mm



SPRING DIVIDERS

Part No.	Arm Length
GZ-01421	100mm
GZ-01422	150mm
GZ-01423	200mm
GZ-01424	250mm
GZ-01425	300mm



Part No.	Length
TM610-115	150mm
TM610-220	200mm
TM610-330	300mm

DIGITAL VERNIER CALIPERS

- Large easy to read dual mode LCD screen (metric/imperial) • Manufactured from hardened stainless steel • Suitable for inside, outside, depth and step measurements • Auto off feature • Zero setting at any position • Durable plastic storage case • Graduation: 1mm intervals • Accuracy: +/- 0.03mm • Resolution: 0.01mm (0.0005")
- Battery included

Drill Doctor
The Drill Bit Sharpener



DRILL DOCTOR XP DRILL BIT SHARPENER

- 2.5mm to 13mm drill bit capacity
- Creates & sharpens split point bits
- 118° sharpening angle
- Adjustable relief angle
- 240V motor
- 3 year warranty (DDXP)



Drill Doctor
The Drill Bit Sharpener



DRILL DOCTOR 500X DRILL BIT SHARPENER

- Tradesman model • 2.5mm to 13mm drill bit capacity • 118° or 135° sharpening angle • Creates & sharpens split point bits • 3 year warranty (DD500X)

Drill Doctor
The Drill Bit Sharpener



DRILL DOCTOR 750X DRILL BIT SHARPENER

- Top of the line tradesman model • 2.5mm to 19mm drill bit capacity • 115° to 140° sharpening angle • Creates & sharpens split point bits • 3 year warranty (DD750X)

WORK SHARP



WSKTS KNIFE & TOOL SHARPENER

- 240V Electric knife sharpener
- Very fast & easy to use
- Flexible abrasive sharpening belts create a superior convex grind on the blade. The edge is stronger, cuts better and stays sharper longer!
- Precision guides: 25° Outdoor knife guides & 20° Kitchen knife guides for precise repeatable results
- Includes 3 abrasive belts (WSKTS-I)



WORK SHARP



GUIDED MANUAL SHARPENER

- Complete sharpening solution for every knife you own • 17° & 20° angle guides
- Interchangeable 320 grit coarse and 600 grit fine 6" diamond plates
- Angle-guided field hone with a three-position ceramic rod (coarse, fine, fish hook groove), and two small diameter ceramic rods for serrations (WSGSS-C)

WORK SHARP



KEN ONION EDITION KNIFE & TOOL SHARPENER

- 240V Electric knife sharpener • The 3/4" x 12" premium, flexible engineered abrasive belts sharpen virtually any shape or type of knife • The sharpening guide is fully adjustable in 1° increments from 15° to 30° • Variable speed control 6000 - 14000rpm (WSKTS-KO)

Holemaker

Drilling Solutions By ITM®

CARBIDE BURRS - DOUBLE CUT

- Premium industrial quality burrs designed for heavy fabrication applications
- 1/4" Shank



3 PIECE 3/8" CARBIDE BURR SET

- Cylindrical end cut
- Cylindrical radius end
- Tree shape radius end
- 1/4" Shank (CB-SET-03)

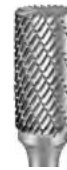
5 PIECE 3/8" CARBIDE BURR SET

- Cylindrical end cut
- Cylindrical radius end
- Ball shape
- Tree shape radius end
- Cylindrical aluminium cut
- 1/4" Shank (CB-SET-01)



CYLINDRICAL END CUT

Part No.	Size
CB-SB1	1/4"
CB-SB3	3/8"
CB-SB5	1/2"
CB-SB6	5/8"



CYLINDRICAL SQUARE END

Part No.	Size
CB-SA1	1/4"
CB-SA3	3/8"
CB-SA5	1/2"
CB-SA6	5/8"



CYLINDRICAL RADIUS END

Part No.	Size
CB-SC1	1/4"
CB-SC3	3/8"
CB-SC5	1/2"
CB-SC6	5/8"



BALL SHAPE

Part No.	Size
CB-SD1	1/4"
CB-SD3	3/8"
CB-SD5	1/2"
CB-SD6	5/8"



Holemaker

Drilling Solutions By ITM®

T.C.T. HOLESAWS 4.5MM DEPTH OF CUT

- Available from 14mm to 150mm
- Suitable for drilling steel, stainless steel, aluminium, FRP, PVC, plastics & fibreglass.

Part No.	Diameter	Depth of Cut
MCS16	16mm	4.5mm
MCS20	20mm	4.5mm
MCS22	22mm	4.5mm
MCS25	25mm	4.5mm
MCS32	32mm	4.5mm
MCS40	40mm	4.5mm
MCS50	50mm	4.5mm



T.C.T. HOLESAWS 25MM DEPTH OF CUT

- Available from 14mm to 120mm
- Suitable for drilling steel plate, stainless steel, A.C. sheeting, aluminium, FRP, PVC, fibreglass & concrete coated pipes

Part No.	Diameter	Depth of Cut
MCTR16	16mm	25mm
MCTR20	20mm	25mm
MCTR22	22mm	25mm
MCTR25	25mm	25mm
MCTR32	32mm	25mm
MCTR40	40mm	25mm
MCTR50	50mm	25mm



GENERAL ENGINEERING COBALT HOLESAW SET

- Set includes: • 16, 19, 22, 25, 32, 35, 38, 44, 51, 57, 64, 76mm holesaws • 11/32" & 7/16" arbors • Arbor extension • 12" extension bar (UN108-100)

Holemaker

Drilling Solutions By ITM®



COUNTERSINK SET 3 FLUTE, 3 TO 20.5MM

- 3 to 8.4mm • 3 to 12.4mm
- 3 to 20.5mm (STSET-05)



COUNTERSINK SET 3 FLUTE, 3 TO 25MM

- 3 to 10.4mm • 3 to 16.5mm
- 3 to 25mm (STSET-03)



COUNTERSINK SET 3 FLUTE, 3 TO 20.5MM

- 3 to 6.4mm • 3 to 8.4mm
- 3 to 10.4mm • 3 to 12.4mm
- 3 to 16.5mm • 3 to 20.5mm (STSET-01)



COUNTERSINK SET 2 TO 25MM

- Cross hole • 5 piece set including: 2 to 5mm, 5 to 10mm, 10 to 15mm, 15 to 20mm, 20 to 25mm (SWSET-05)

Holemaker

Drilling Solutions By ITM®

STEP DRILLS SPIRAL FLUTE

- Titanium Nitride Coated

Part No.	Sizes Inc.
SD4-20MM	4 to 20mm
SD5-25MM	5 to 25mm
SD6-30MM	6 to 30mm
SD7-40.5MM	7 to 40.5mm



STEP DRILL SET SPIRAL FLUTE

- 4 to 20mm • 5 to 25mm • 6 to 30mm (SDSET-1)



STEP DRILLS STRAIGHT FLUTE

- Titanium Nitride Coated

Part No.	Sizes Inc.
SDST4-12MM	4 to 12mm
SDST4-20MM	4 to 20mm
SDST5-25MM	5 to 25mm
SDST6-30MM	6 to 30mm



STEP DRILL SET STRAIGHT FLUTE

- 4 to 12mm • 5 to 25mm • 6 to 30mm (SDSTSET-1)



TWIST KNOT CUP BRUSHES



Part No.	Dia.	Thread	Thread Adaptor	Wire Dia.	Max RPM
Steel Wire					
TM7000-050	50mm	1/4" Hex	-	0.50mm	12,000
TM7000-065	65mm	M14 x 2.00	M10 x 1.25 & M10 x 1.5	0.50mm	12,500
TM7000-065B (Boxed)	65mm	M14 x 2.00	M10 x 1.25 & M10 x 1.5	0.50mm	12,500
TM7000-075	75mm	M14 x 2.00	M10 x 1.25 & M10 x 1.5	0.50mm	12,500
TM7000-075B (Boxed)	75mm	M14 x 2.00	M10 x 1.25 & M10 x 1.5	0.50mm	12,500
TM7000-100	100mm	M14 x 2.00	-	0.50mm	8,500
TM7000-125	125mm	M14 x 2.00	-	0.50mm	6,500
Stainless Steel Wire					
TM7000-265	65mm	M14 x 2.00	M10 x 1.25 & M10 x 1.5	0.50mm	12,500
TM7000-275	75mm	M14 x 2.00	M10 x 1.25 & M10 x 1.5	0.50mm	12,500
TM7000-210	100mm	M14 x 2.00	-	0.50mm	8,500

TWIST KNOT CUP BRUSHES WITH BAND



Part No.	Dia.	Thread	Thread Adaptor	Wire Dia.	Max RPM
Steel Wire					
TM7001-065	65mm	M14 x 2.00	M10 x 1.25 & M10 x 1.5	0.50mm	12,500
TM7001-075	75mm	M14 x 2.00	M10 x 1.25 & M10 x 1.5	0.50mm	8,500
TM7001-075B (Boxed)	75mm	M14 x 2.00	M10 x 1.25 & M10 x 1.5	0.50mm	8,500
TM7001-100	100mm	M14 x 2.00	-	0.50mm	8,500
TM7001-125	125mm	M14 x 2.00	-	0.80mm	6,500
Stainless Steel Wire					
TM7001-175	75mm	M14 x 2.00	M10 x 1.25 & M10 x 1.5	0.50mm	8,500
TM7001-110	100mm	M14 x 2.00	-	0.50mm	8,500

CRIMP WIRE CUP BRUSHES



Part No.	Dia.	Thread	Thread Adaptor	Wire Dia.	Max RPM
Steel Wire					
TM7010-065	65mm	M14 x 2.00	M10 x 1.25 & M10 x 1.5	0.30mm	12,500
TM7010-075	75mm	M14 x 2.00	M10 x 1.25 & M10 x 1.5	0.30mm	12,500
TM7010-100	100mm	M14 x 2.00	-	0.30mm	8,500
TM7010-125	125mm	M14 x 2.00	-	0.30mm	6,500
Stainless Steel Wire					
TM7010-275	75mm	M14 x 2.00	M10 x 1.25 & M10 x 1.5	0.30mm	12,500

TWIST KNOT BEVEL BRUSHES



Part No.	Dia.	Thread	Thread Adaptor	Wire Dia.	Max RPM
Steel Wire					
TM7002-075	75mm	1/4 "HEX Shank	-	0.50mm	12,500
TM7002-100	100mm	1/4 "HEX Shank	-	0.50mm	12,500
TM7002-110	100mm	M14 x 2.00	M10 x 1.25 & M10 x 1.5	0.50mm	12,500
TM7002-125	125mm	M14 x 2.00	-	0.50mm	12,500
Stainless Steel Wire					
TM7002-210	100mm	M14 x 2.00	M10 x 1.25 & M10 x 1.5	0.50mm	12,500

CRIMP WIRE BEVEL BRUSHES



Part No.	Dia.	Thread	Thread Adaptor	Wire Dia.	Max RPM
Steel Wire					
TM7011-100	100mm	M14 x 2.00	M10 x 1.25 & M10 x 1.5	0.30mm	12,500
Stainless Steel Wire					
TM7011-110	100mm	M14 x 2.00	M10 x 1.25 & M10 x 1.5	0.30mm	12,500

TWIST KNOT WHEELS



Part No.	Dia.	Thread	Thread Adaptor	Wire Dia.	Max RPM
Steel Wire					
TM7003-085	85mm	1/4" Spindle	-	0.50mm	12,000
TM7003-100	100mm	M14 x 2.00	M10 x 1.25 & M10 x 1.5	0.50mm	20,000
TM7003-125	125mm	M14 x 2.00	M10 x 1.5	0.50mm	12,500
TM7003-150	150mm	22.2mm Bore	Bore Adaptor 5/8" & 1/2"	0.50mm	9,000
TM7003-200	200mm	22.2mm Bore	Bore Adaptor 5/8" & 1/2"	0.50mm	6,000
Stainless Steel Wire					
TM7003-225	125mm	22.2mm Bore	5/8"	0.50mm	12,500

THREAD ADAPTOR

Part No.	Dia.
TM7030-002	Pack of 2 Arbor Thread Adaptors M10x1.25 & M10x1.5

TWIST KNOT PIPELINE



Part No.	Dia.	Bore	Wire Dia.	Max RPM
Steel Wire				
TM7004-125	125mm	22.2mm	0.50mm	12,500
TM7004-150	150mm	22.2mm	0.50mm	9,000
TM7004-178	178mm	22.2mm	0.50mm	9,000

CRIMP WIRE WHEELS

- Includes Multi Bore Adaptors
- Sizes down to 1/2" Diameter



Part No.	Dia.	Bore	Width	Wire Dia.	Max RPM
Steel Wire					
TM7012-125	125mm	20mm	18mm	0.30mm	6,000
TM7012-150	150mm	32mm	19mm	0.30mm	6,000
TM7012-151	150mm	32mm	25mm	0.30mm	6,000
TM7012-200	200mm	32mm	20mm	0.30mm	4,500
TM7012-201	200mm	32mm	25mm	0.30mm	4,500
TM7012-250	250mm	32mm	40mm	0.30mm	3,000
TM7012-300	300mm	32mm	40mm	0.30mm	3,000
Stainless Steel Wire					
TM7012-415	150mm	32mm	19mm	0.30mm	6,000
TM7012-416	150mm	32mm	25mm	0.30mm	6,000
TM7012-220	200mm	32mm	20mm	0.30mm	4,500
TM7012-221	200mm	32mm	25mm	0.30mm	4,500

CRIMP WIRE SPINDLE MOUNTED CUP BRUSH



Part No.	Dia.	Shank	Trim	Wire Dia.	Max RPM
Steel Wire					
TM7021-065	65mm	1/4" Hex	18mm	0.30mm	4,500
TM7021-075	75mm	1/4" Hex	10mm	0.30mm	4,500

NYLON GRIT FILAMENT WHEELS



Part No.	Dia.	Shank	Width	Wire Dia.	Max RPM
Nylon Wire					
TM7102-050	50mm	1/4" Hex	7mm	80 GRIT	4,500
TM7102-075	75mm	1/4" Hex	10mm	80 GRIT	4,500
TM7102-100	100mm	1/4" Hex	12mm	80 GRIT	4,500

NYLON GRIT FLAPPER WHEEL



Part No.	Dia.	Shank	Width	Max RPM
Nylon Wire				
TM7103-100	100mm	1/4" Hex	80 GRIT	4,500

HIGH SPEED CRIMP WIRE WHEELS



Part No.	Dia.	Shank	Width	Wire Dia.	Max RPM
Steel Wire					
TM7014-025	25mm	1/4" Round	6mm	0.20mm	20,000
TM7014-030	30mm	1/4" Round	9mm	0.20mm	20,000
TM7014-040	40mm	1/4" Round	11mm	0.20mm	20,000
TM7014-050	50mm	1/4" Round	10mm	0.30mm	15,000
TM7014-075	75mm	1/4" Round	18mm	0.30mm	15,000
Stainless Steel Wire					
TM7014-150	50mm	1/4" Round	17mm	0.30mm	15,000
TM7014-175	75mm	1/4" Round	18mm	0.30mm	15,000
Brass Wire					
TM7014-275	75mm	1/4" Round	18mm	0.30mm	15,000

CRIMP WIRE WHEELS



Part No.	Dia.	Shank	Width	Wire Dia.	Max RPM
Steel Wire					
TM7022-050	50mm	1/4" Hex	7mm	0.30mm	4,500
TM7022-075	75mm	1/4" Hex	10mm	0.30mm	4,500
TM7022-100	100mm	1/4" Hex	12mm	0.30mm	4,500

PLASTIC HANDLE HAND BRUSH



Part No.	Material	Overall Length	Brush Length	Wire Length
TM7040-001	Steel	265mm	140mm	25mm
TM7040-002	Stainless Steel	265mm	140mm	25mm
TM7040-003	Brass	265mm	140mm	25mm

WOOD HANDLE HAND BRUSH



Part No.	Material	Overall Length	Rows	Note
Steel Wire				
TM7050-004	Steel	353mm	3x19	-
TM7050-005	Steel	353mm	4x19	-
TM7050-007	Steel	353mm	3x19	With Scraper
Stainless Steel Wire				
TM7050-008	Stainless Steel	353mm	3x19	-
TM7050-009	Stainless Steel	353mm	4x19	-
Brass Wire				
TM7050-010	Brass	353mm	3x19	-
TM7050-011	Brass	353mm	4x19	-



TM7016-003



TM7016-005



TM7016-008



TM7016-006

CRIMP WIRE KITS

Part No.	Description
Steel Wire	
TM7016-003	3 Piece Kit Includes: 50mm Wheel Brush, 50mm Cup Brush & 25mm End Brush
TM7016-005	5 Piece Kit Includes: 50mm & 75mm Cup Brush, 50mm & 75mm Wheel Brush & 25mm End Brush
TM7016-008	5 Piece Kit Includes: 25mm, 38mm, 50mm, 63mm & 75mm Wire Wheel Brushes & 3 Arbors
TM7016-006	6 Piece Kit Includes: 2x 40mm, 50mm, 63mm, & 75mm Wire Wheel Brushes & 50mm Cup Brush



LOCAL DISTRIBUTOR



18 BUSINESS ST, YATALA QLD 4207 AUSTRALIA
PH: 07 3287 1114 FX: 07 3287 1115
sales@industrialtool.com.au
www.itmtools.com.au

